

LED POOL LIGHT

ITEM NO.: LPL-PAR56 Series

INSTRUCTION OF LED POOL LIGHT LPL-PAR56

This product is mainly used for swimming pool, underwater fixture. With friendly and convenient operation, it can offer magic effects in water and ground.

A. Specification

A-1. Structure

Materials Of Shell: Aluminum + PC Cover

Operating Voltage: 24V DC

Protection Rating: IP68

Operating Temperature: -20°C~40°C



LPL-PAR56-18P

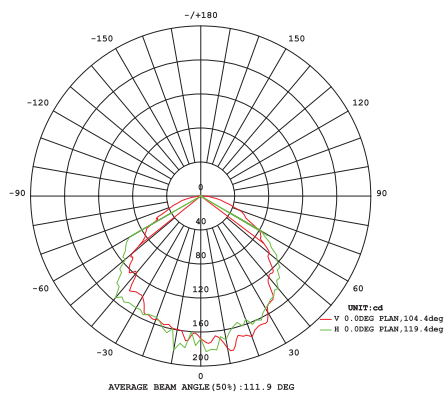
A-2. Model Configuration Table

Model No.	LED Color	LED Quantity	Power Consumption	Working Voltage	Size	Weight	✓
LPL-PAR56-18P	R, G, B, WW, W	18P	22 WATTS	24V DC	Φ 178 × 102mm	0.7kgs±5%	

B. Photometrics

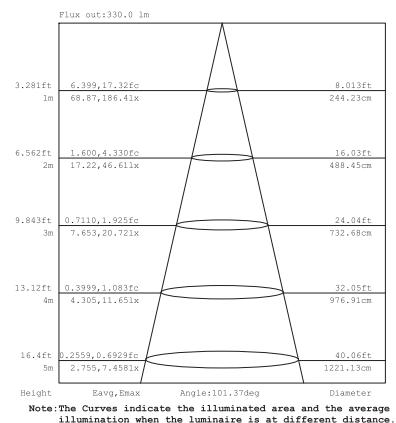
B-1. Cadela distribution

LPL-PAR56-18P-24V



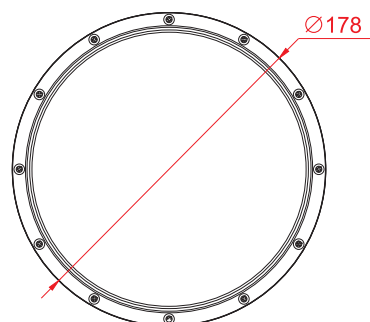
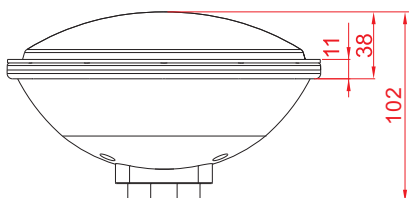
RGB

C-2. Illuminance at a distance



RGB

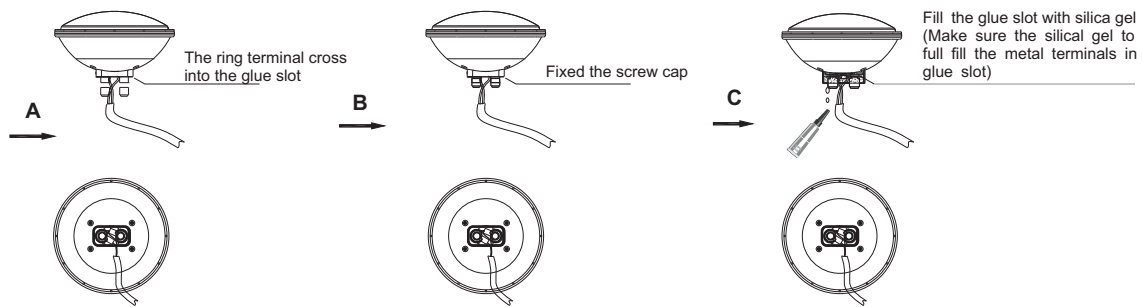
C. Dimension Drawing



LED POOL LIGHT

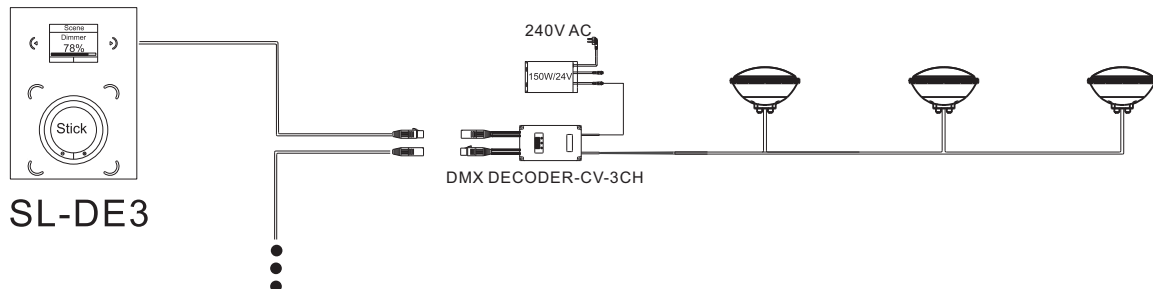
ITEM NO.: LPL-PAR56 Series

D. Installation



E. Connection

This RGB 3 color fixture must be controlled by DMX decoder with 3 channels. The connecting diagram as follows.



Caution:

1. Do not plug them into power when the product is still in package;
2. Don't use anything to cover the fixture during application;
3. Don't use this product in close environment;
4. If this product appears to be damaged, do not attempt any repair, please contact your dealer.

Warning:

- * Neglect on action of the above treatment will lead to failure of waterproof and proper working of the lights!!!
- * Make sure the ground connection well avoid electric shock, due to metal housing.